

SANS

Social & Affective Neuroscience Society

2025 PARTNERSHIP PROSPECTUS

April 23-26, 2025

Chicago, USA





DEAR COLLABORATORS AND INDUSTRY PARTNERS,

Have you wondered about what makes people “**connect**” with each other? Why people have difficulty controlling their feelings? Or how our close personal relationships foster well-being?

The **Social and Affective Neuroscience Society (SANS)** is dedicated to understanding the psychological and neural processes underlying emotion regulation, social network formation, close relationships, and more, as well as their role in promoting health and mitigating psychiatric illness.

On behalf of SANS, I invite you to partner with us to achieve these goals! As a sponsor or exhibitor, you will gain on-site exposure to a highly engaged audience of principal investigators and researchers, and your brand will be promoted to our broader community of **over 3,500 members and affiliates**.

Our annual conference attracts **over 350 researchers and academics** engaged in pioneering research. Our next annual conference is from **April 23-26, 2025**, in **Chicago, IL**, at the **DoubleTree Hilton Hotel - Magnificent Mile**. The conference offers exclusive opportunities for networking with SANS members.

We invite you to join us now and show your support by selecting from this prospectus's wide variety of sponsorship and exhibitor packages. The sooner you join us, the sooner we can incorporate your information into our society communications, conference activities, and more. Your support will play a vital role in the success of SANS and our collective goal of understanding how the brain gives rise to social and emotional well-being

We are looking forward to partnering with you on this endeavor!

Ajay B. Satpute
President
Social and Affective Neuroscience Society (SANS)

MEET THE SANS LEADERSHIP



Ajay
Satpute
President



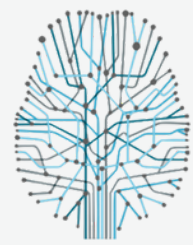
Dominic
Fareri
Vice President



Aaron
Heller
Past President



Pin-Hao (Andy)
Chen
Secretary-Treasurer



SANS

Social & Affective Neuroscience Society



DIRECTORS-AT-LARGE



Caroline Charpentier



Oriel FeldmanHall



Eshin Jolly



Jennifer Kubota



Yuan Chang Leong



Meghan L. Meyer



Mark Thornton



Hongbo Yu

ABOUT THE SOCIAL & AFFECTIVE NEUROSCIENCE SOCIETY

Social and affective neuroscience is an interdisciplinary field of research that seeks to understand the neural and behavioral dynamics underlying phenomena such as interpersonal interactions, social networks, social communication, cooperation, social cognition, and aggression.

The Social & Affective Neuroscience Society (SANS) is committed to interdisciplinary approaches to investigate the neural basis of social and affective processes, which are at the heart of many mental health conditions, including depression, anxiety, and substance use disorders.

The Society was founded in 2008 and now comprises over 350 members. One of the main ways that SANS promotes social and affective neuroscience is by holding an annual meeting.

ABOUT THE 2025 SANS ANNUAL CONFERENCE

WHERE BRIGHT MINDS BRING BRIGHT IDEAS TO LIFE

The SANS 2025 Annual Meeting will be an exciting interdisciplinary conference showcasing diverse topics and viewpoints on social and affective neuroscience.

Our symposia will cover stimulating and timely topics representing multiple perspectives on affective neuroscience.

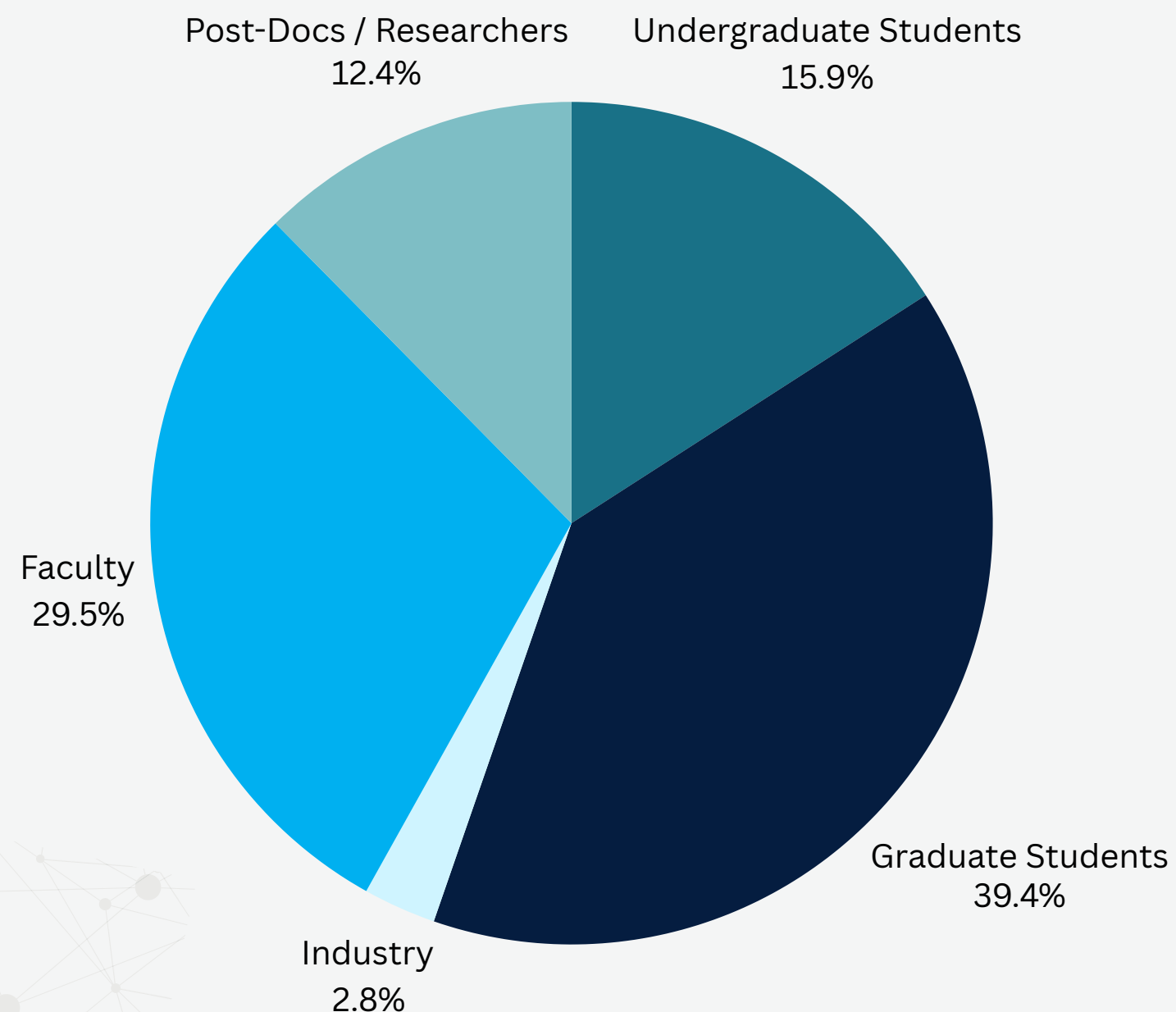
We are expecting **over 350 attendees** from students and post-docs, to faculty and researchers!





WHO ATTENDS?

We gather bright and passionate people from all career stages!



WHY ATTEND?

- High quality and timely content
- Interaction with mentors, mentees and peers from all over the world
- Enhanced ability to network with leaders, suppliers and professionals to consider new and innovative ideas and services and much more!



A close-up photograph of two business professionals in suits shaking hands. The image is overlaid with a semi-transparent blue filter. The text 'PARTNER WITH US' is centered over the handshake in a large, white, bold, sans-serif font.

PARTNER WITH US

Explore available sponsor & exhibitor opportunities for the conference

WHY SPONSOR?

GET NOTICED

The SANS Conference provides an excellent opportunity for your product or brand to be exposed to over 350 delegates from the field of social and affective neuroscience. Differentiate your company from your competitors, increase your company's visibility or introduce your new products to this unique group of leaders.

Connect with investigators, researchers, scientists and trainees actively involved in social and affective neuroscience research with the opportunity to build relationships and form valuable partnerships. Conference registration, marketing opportunities, exhibit booths and networking are among the many benefits associated with sponsoring this conference.

FACE TIME WITH LEADING SCIENTISTS

PREMIUM BRANDING & POSITIONING

Reach your target audience and be recognized as a supporter of the conference and its aims. Set your product, service and brand apart from your competitors – guaranteed visibility on printed and digital materials, advertising, and promotions.

Gain exposure, build relationships, develop partnerships and connect with representatives actively involved in Neuroscience research from across North America and around the world.

CONNECT WITH EMERGING RESEARCHERS

BASE SPONSORSHIP PACKAGES

Gold Sponsor \$5,000

- 1x Complimentary Registration
- Quarter-Page Ad in Digital Program
- Logo & Link Placement in Program and on Website
- Logo & Link in all Congress Emails
- Partnership Announcement to SANS Community

Silver Sponsor \$3,500

- 1 x Complimentary Registration
- Logo & Link Placement in Program and on Website
- Logo & Link in three (3) Society & Congress Emails
- Partnership Announcement to SANS Community

Bronze Sponsor \$1,500

- Logo & Link Placement in Program and on Website
- Partnership Announcement to SANS Community

SPONSOR PACKAGE INCLUSIONS

You can elect how you would like your sponsorship to be used by choosing one of the following:

GOLD LEVEL

- A Keynote Speaker
- Early or Mid Career Award Winner Session
- Sponsor 5 travel awards for trainees
- A Poster Session
- Co-Sponsor the Welcome Reception

**Gold level sponsors will receive 20% off the cost of an exhibit booth*

SILVER LEVEL

- An Oral Session
- Sponsor 3 travel awards for trainees
- The Mentor-Mentee Welcome Event
- A Morning Coffee Break

**Silver level sponsors will receive 10% off the cost of an exhibit booth*



ADDITIONAL STAND ALONE OPPORTUNITIES

Note: additional options may become available as the program is developed



Pre-Conference Workshop Sponsor: \$7,500

- Listed in program as a supporter of the session
- Logo & link placement in program and on Website
- Quarter-page ad in Digital Program
- 1 Complimentary invitation to session with introduction at the start of the session
- 1 complimentary Conference Registration
- Verbal recognition by program chair at the Opening Remarks of the main conference
- Partnership announcement to SANS Community



EDIJ Event Sponsor: \$4,500

- Listed in program as a supporter of SANS and EDIJ
- Logo recognition at the event, and on the tickets if applicable
- 1 complimentary Conference Registration
- Complimentary invitation to session or event
- Verbal recognition by program chair at the Opening Remarks
- Partnership announcement to SANS Community

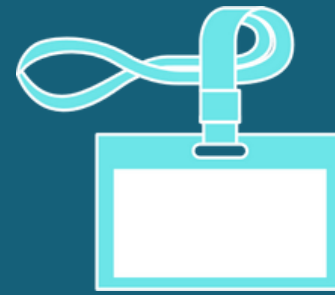
ADDITIONAL STAND ALONE OPPORTUNITIES

Note: additional options may become available as the program is developed



Symposia Sponsor: \$3,000

- Recognition in e-blasts and online program information
- Recognition on opening and closing slides, as well as in the program schedule
- Verbal recognition by a Program Co-Chair



Lanyards: \$1,500

Cost of lanyard & production are additional

- Company logo and artwork on all Conference lanyards
- Recognition at Closing Remarks



Support a Student: \$1,000

Provides a student with a financial award to assist with their conference attendance.

- Voluntary meet-up with student(s) you are supporting.
- Recognition at Closing Remarks
- Students must submit abstracts and are chosen by the EDIJ Committee

Note: additional options may become available as the program is developed

EXHIBIT OPPORTUNITY

Tabletop Exhibit: \$1,250

Your unique spot to interact with delegates

- One 6ft. skirted table with 2x chairs
- One discounted registration for \$300
- Recognition and acknowledgement in Scientific Program
- Acknowledgement on exhibition signage
- Electrical outlet to be purchased separately

**Note pop up banners cannot be placed on either side of table. Items may be placed on or behind the tabletop only.*





LET'S WORK TOGETHER

Get in touch with us about sponsor & exhibitor opportunities today!



Email us

sans@podiumconferences.com



Visit our Website

socialaffectiveneuro.org



SANS

Social & Affective Neuroscience Society