

# SANS

Social & Affective Neuroscience Society

# 2024 PARTNERSHIP PROSPECTUS







Aaron Heller, President

## DEAR COLLABORATORS AND INDUSTRY PARTNERS,

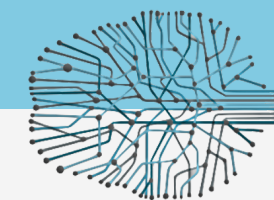
We invite you to support the upcoming SANS Annual Conference taking place from April 10-13, 2024 in Toronto, Canada at the Westin Harbour Castle!

We are looking forward to great scientific dialogue and offer expanded opportunities for participants to share, network and grow both in formal and more informal settings.

Partner with us by becoming a Sponsor for the conference and/or Exhibitor and display your products and services. Gain on-site exposure to over 300 delegates from around the world. You will be able to connect with a large contingent of Principle Investigators and researchers undertaking cutting edge research. Additionally, you will also have your brand shared with our larger community of over 2,000.

Full details can be found in this package. We welcome any questions or ideas you may have. Contact us at [SANS@podiumconferences.com](mailto:SANS@podiumconferences.com)

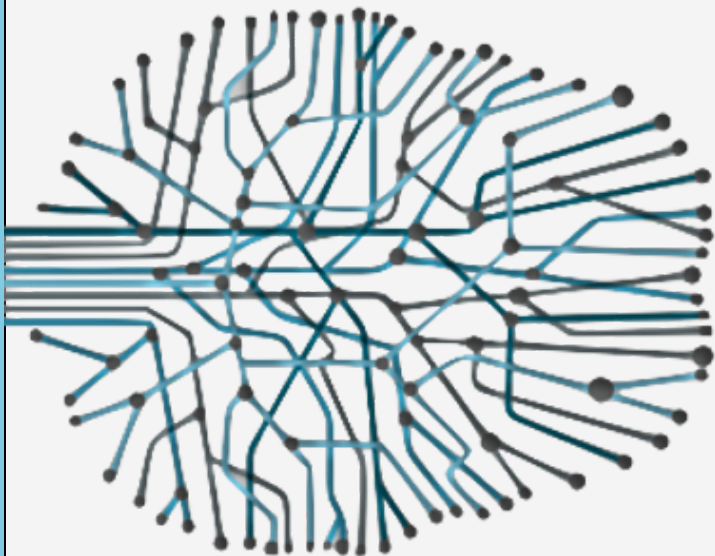
Aaron Heller, President



# WELCOME

Social and affective neuroscience is an interdisciplinary field of research that seeks to understand the neural and behavioral dynamics underlying phenomena such as interpersonal interactions, social networks, social communication, cooperation, social cognition, and aggression.

The Social & Affective Neuroscience Society (SANS) is committed to interdisciplinary approaches to investigate the neural basis of social and affective processes, which are at the heart of many mental health conditions, including depression, anxiety, and substance use disorders. The Society was founded in 2008 and now comprises over 350 members. One of the main ways that SANS promotes social and affective neuroscience is by holding an annual meeting.



# ABOUT THE SOCIAL & AFFECTIVE NEUROSCIENCE SOCIETY



# ABOUT THE 2024 SANS ANNUAL CONFERENCE

WHERE BRIGHT MINDS BRING BRIGHT IDEAS TO LIFE



The SANS 2024 Annual Meeting will be an exciting interdisciplinary conference showcasing diverse topics and viewpoints on social and affective neuroscience. Our symposia will cover stimulating and timely topics representing multiple perspectives on affective neuroscience. We are expecting over 300 attendees from students and post-docs, to faculty and researchers!

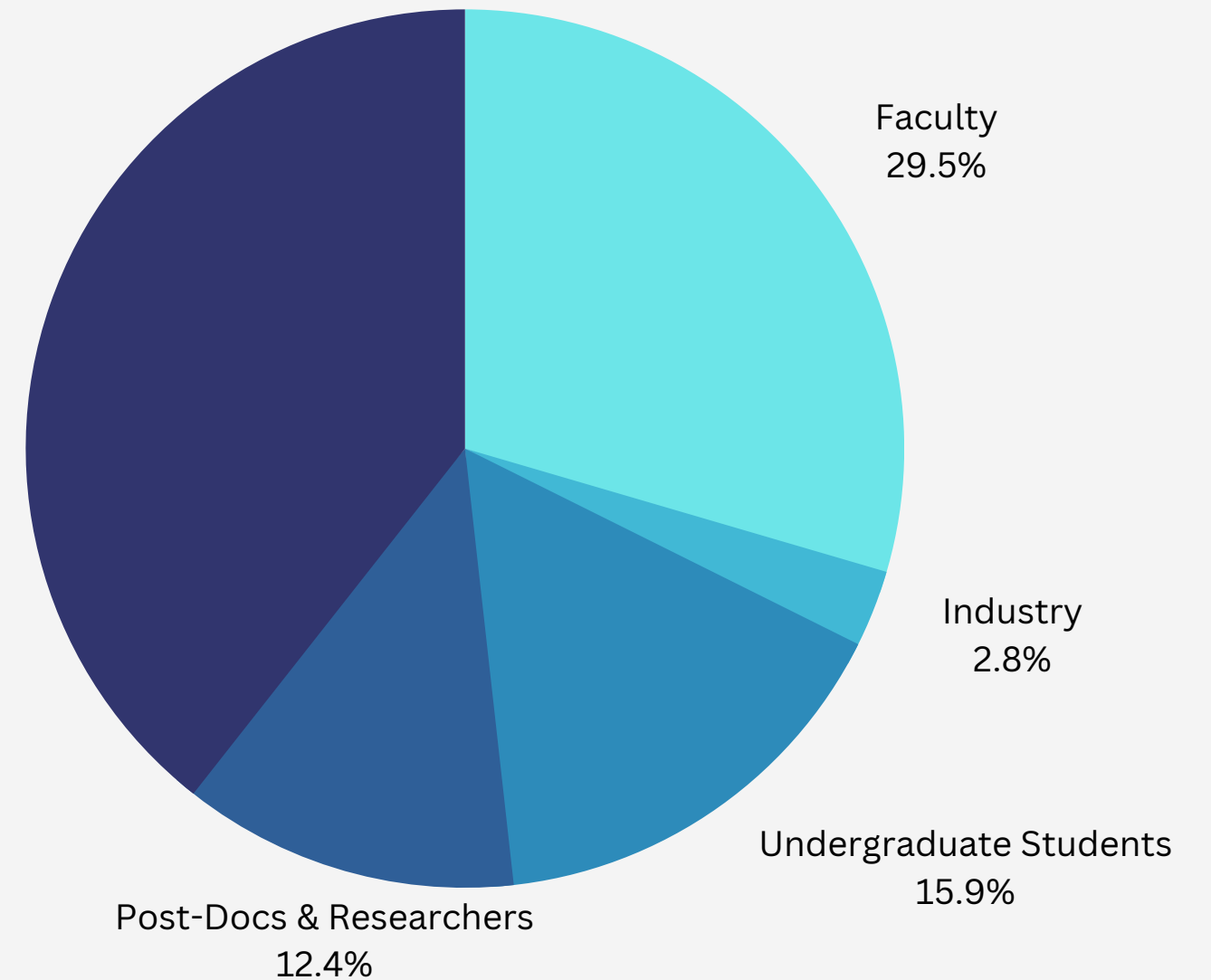
# WHO ATTENDS THE SANS ANNUAL CONFERENCE

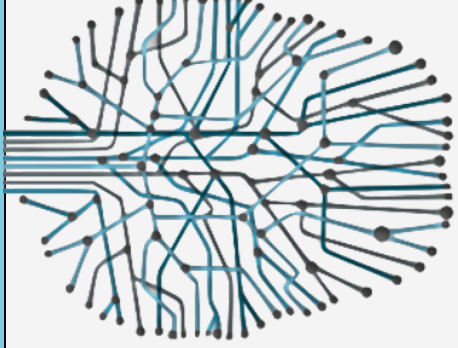
We gather bright and  
passionate people from  
all career stages!

## WHY THEY ATTEND:

- High quality and timely content
- Interaction with mentors, mentees and peers from all over the world
- Enhanced ability to network with leaders, suppliers and professionals to consider new and innovative ideas and services
- and much more

Graduate Students  
39.4%





# WHY SPONSOR?

## GET NOTICED

The SANS Conference provides an excellent opportunity for your product or brand to be exposed to over 300 delegates from the field of social and affective neuroscience. Differentiate your company from your competitors, increase your company's visibility or introduce your new products to this unique group of leaders.



## FACE TIME WITH LEADING SCIENTISTS



Connect with investigators, researchers, scientists and students actively involved in social and affective neuroscience research with the opportunity to build relationships and form valuable partnerships. Conference registration, marketing opportunities, exhibit booths and networking are among the many benefits associated with sponsoring this conference.

## PREMIUM BRANDING & POSITIONING

Reach your target audience and be recognized as a supporter of the conference and its aims. Set your product, service and brand apart from your competitors – guaranteed visibility on printed and digital materials, advertising, and promotions.

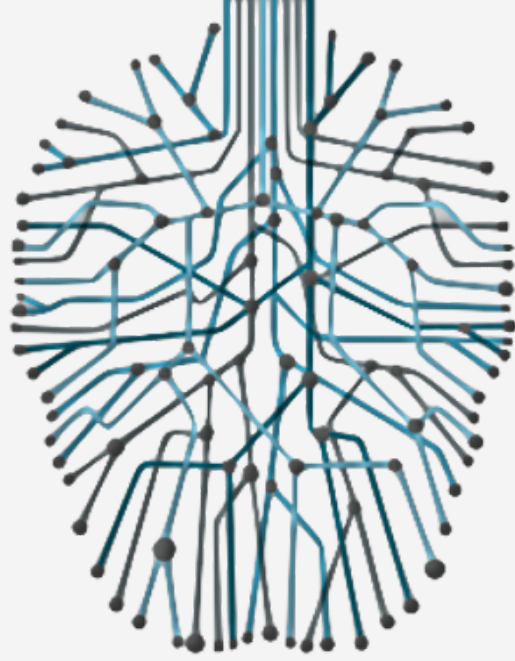


## CONNECT WITH EMERGING RESEARCHERS



Gain exposure, build relationships, develop partnerships and connect with representatives actively involved in Neuroscience research from across North America and around the world.





# PARTNER WITH US

Let's explore sponsor &  
exhibitor opportunities





# BASE SPONSORSHIP PACKAGES



## Gold Sponsor - \$5,000

1 x Complimentary Registration  
Quarter-Page Ad in Digital Program  
Logo & Link Placement in Program and on Website  
Logo & Link in all Society & Congress Emails  
Partnership Announcement to SANS Community

## Silver Sponsor - \$3,500

1 x Complimentary Registration  
Logo & Link Placement in Program and on Website  
Logo & Link in three (3) Society & Congress Emails  
Partnership Announcement to SANS Community

## Bronze Sponsor - \$1,000

Logo & Link Placement in Program and on Website  
Partnership Announcement to SANS Community



# SPONSOR PACKAGE

## ADD-ONS

### ADDITIONAL ADD-ONS

Sponsor a Food & Beverage Event

Sponsor a Keynote

Sponsor Newcomers' Welcome

Sponsor Conference Lanyards

Sponsor a Coffee Break

Sponsor a Student

Become an Exhibitor

**GOLD**  
**\$5,000**

**SILVER**  
**\$3,500**

**BRONZE**  
**\$1,000**

+\$2,000

+\$2,000

+\$1,500

+\$1,500

+\$1,500

+\$1,500

+\$1,500

+\$1,500

+\$1,000

+\$1,000

+\$1,000

+\$1,000

+\$1,000

+\$1,000

+\$1,250\*

+\$1,250\*

+\$1,250

\*See pages 8 and 9 for additional add-on details

\*20% Offered to Gold & Silver level sponsors

# SPONSOR PACKAGE ADD-ONS (1/2)

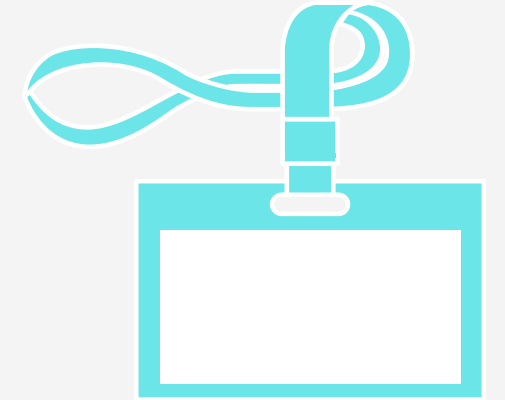


## **Support a Student - \$1,000: Provides a Student with Complimentary Registration**

- Introduction to the students you are sponsoring to arrange a meet-up should you wish
- Recognition and thank you at the Closing Remarks of the conference

## **Lanyards for All Conference Attendees - \$1,500\***

- Can only be purchased by Gold or Silver Sponsors
- You provide your organization's logo artwork and colour requirements and we will have the lanyards made. They will be handed out with all delegate name badges.



## **Keynote Session Sponsor - \$1,500\***

- Can only be purchased by Gold or Silver Sponsor
- Logo recognition on intro and exit slides as well as in the program schedule
- Verbal recognition by a Program Co-Chair

\*Indicates an opportunity for exclusive sponsorship

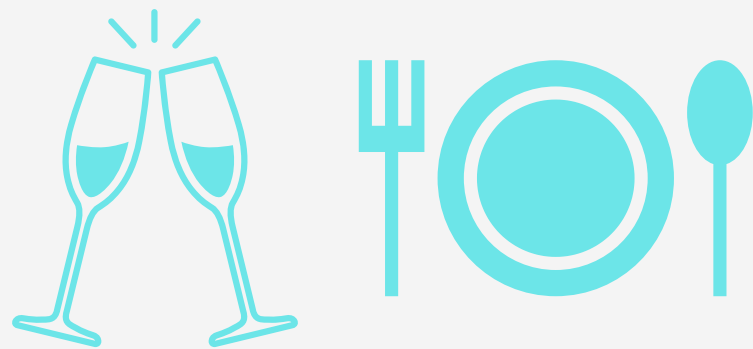
Note: additional options may become available as the program is developed



# SPONSOR PACKAGE ADD-ONS (2/2)

## Newcomers' Welcome – \$1,500\*

- Can only be purchased by a Gold or Silver Level Sponsor
- Welcome First Timers to SANS 2024, introduce your company and what you do. Will be introduced by key Board Members and Program Chairs.
- Will also include a verbal thank you at opening session by President or Program Chairs.



## Food & Beverage Event - \$2,000\*

- Can only be purchased by a Gold or Silver Level Sponsor
- Logo recognition on all food stations and event tickets if applicable
- Verbal recognition by program chair at the Opening & Closing Remarks

## Coffee Break - \$1,000

- Verbal recognition by program chair at end of session before coffee break
- Multiple breaks or full day available – please contact us to discuss



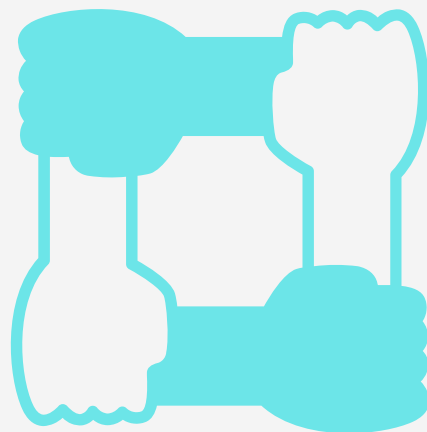
\*Indicates an opportunity for exclusive sponsorship

Note: additional options may become available as the program is developed

# STAND ALONE SPONSOR OPPORTUNITIES

## Co-Sponsor Student Social - \$1,500

- Listed in program as a supporter of SANS
- Logo recognition at the event, and on the tickets
- Verbal recognition by program chair at the Opening Remarks



## Sponsor an EDIJ Event - \$2,500\*

- Listed in program as a supporter of SANS
- Logo recognition at the event, and on the tickets
- Verbal recognition by program chair at the Opening Remarks

\*Indicates an opportunity for exclusive sponsorship

Note: additional options may become available as the program is developed



## **Secure a Tabletop Exhibit Booth - Your Unique Spot to Interact with Delegates - \$1,250:**

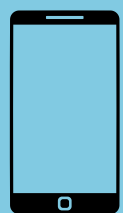
- Includes one (1) discounted registration for \$250
- Includes 1 x table and 2 x chairs
- Present the best experience for SANS attendees with videos, or special deals at your tabletop booth throughout the conference
- Customize your space to your colors, with your marketing materials
- Offer specials and incentives to stop by your booth during the conference



# **EXHIBITOR OPPORTUNITIES**

# LET'S WORK TOGETHER

Get in touch with us about sponsors & exhibitor opportunities today!



## CALL US

+1 250 472 7644 ext. 119



## EMAIL US

[sans@podiumconferences.com](mailto:sans@podiumconferences.com)



## VISIT OUR WEBSITE

[socialaffectiveneuro.org](http://socialaffectiveneuro.org)





# THANK YOU!

Please reach out with any questions or if you would like to partner with us in a way that you don't see here!

